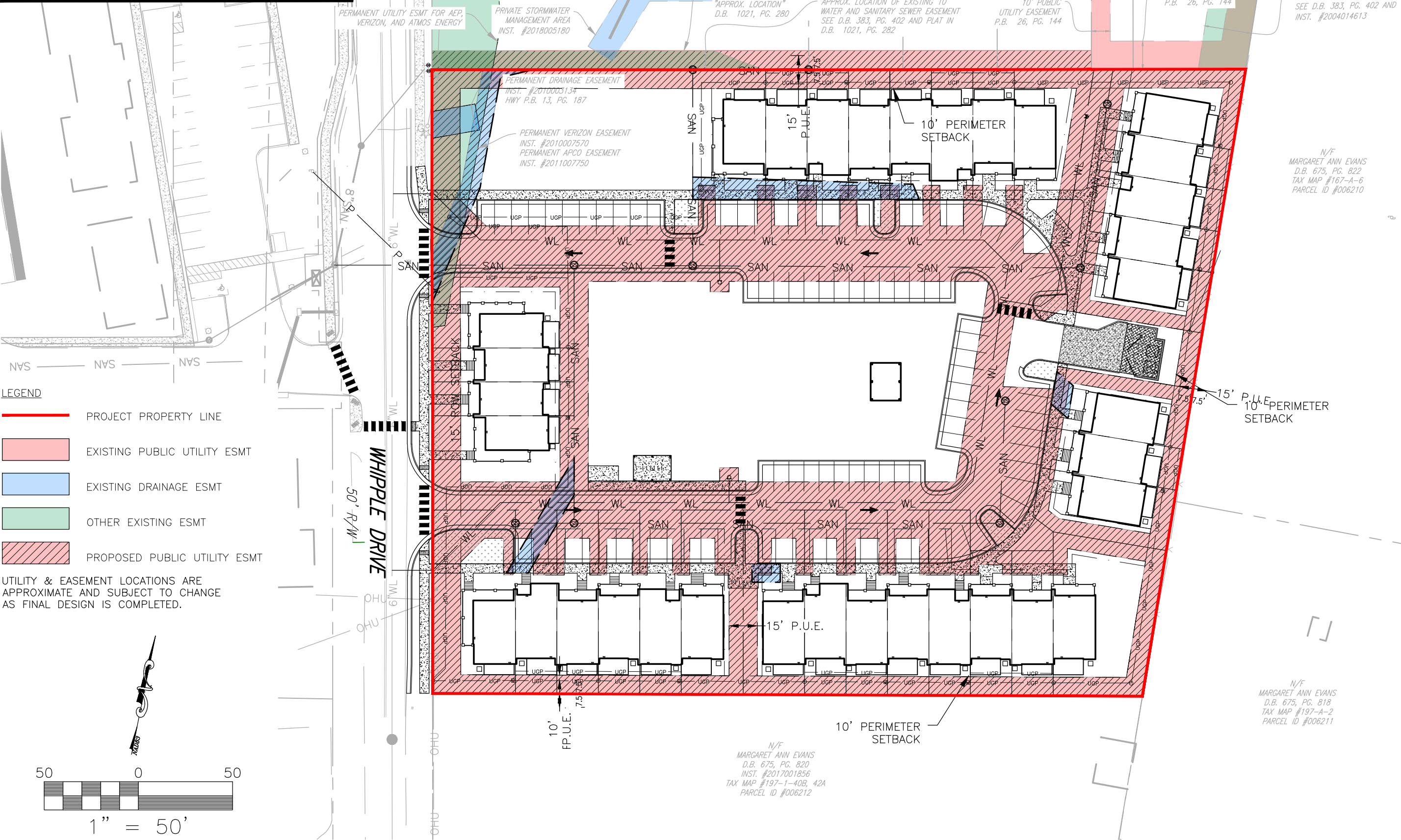


SITE LAYOUT AND PROPOSED INTERIOR LOT LINES ARE CONCEPTUAL AND MAY CHANGE SLIGHTLY THROUGHOUT THE REVIEW AND FINAL DESIGN PROCESS. ANY CHANGES MADE TO THE INTERIOR OF THE SITE WILL NOT AFFECT PROPOSED PERIMETER EASEMENTS.



- LEGEND**
- PROJECT PROPERTY LINE
 - EXISTING PUBLIC UTILITY ESMT
 - EXISTING DRAINAGE ESMT
 - OTHER EXISTING ESMT
 - PROPOSED PUBLIC UTILITY ESMT

UTILITY & EASEMENT LOCATIONS ARE APPROXIMATE AND SUBJECT TO CHANGE AS FINAL DESIGN IS COMPLETED.



BALZER & ASSOCIATES
 PLANNERS / ARCHITECTS
 ENGINEERS / SURVEYORS

Roanoke / Richmond
 New River Valley
 Shenandoah Valley

www.balzer.cc

80 College Street
 Suite H
 Christiansburg, VA 24073
 540.381.4290

WHIPPLE DRIVE TOWNHOMES
 PLANNED RESIDENTIAL DEVELOPMENT
 PROPOSED SHARED PUBLIC UTILITY EASEMENTS

MOUNT TABOR MAGISTERIAL DISTRICT
 TOWN OF BLACKSBURG, MONTGOMERY COUNTY, VIRGINIA

DATE 8/17/22
 SCALE 1"=50'
 REVISIONS

EX1

PROJECT NO 24210126.00