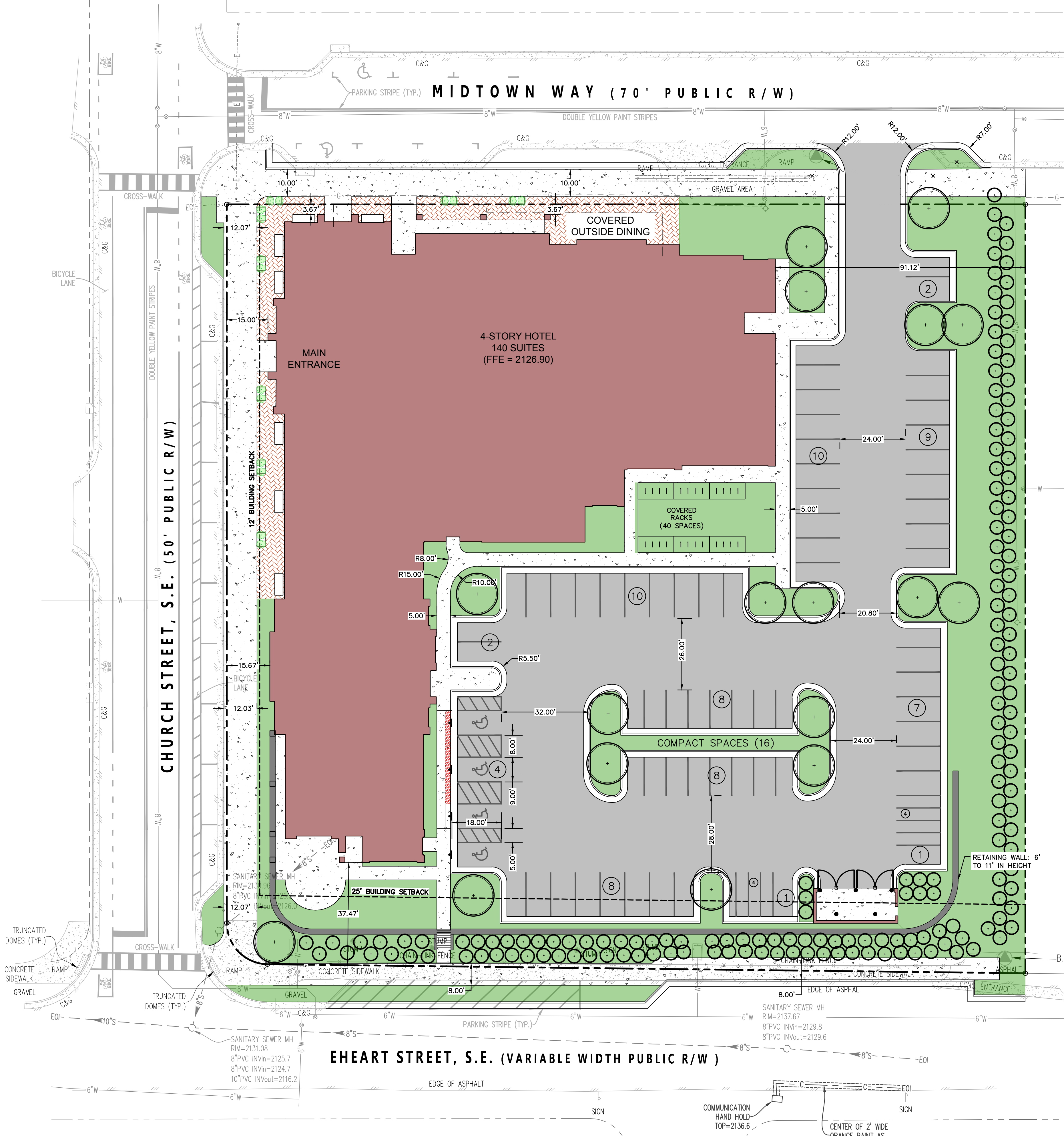


X:\Drawings\3283\ENGINEERING\Design\Plans\3283_Sht_C2_Site_Layout_Plan_Concept.dwg
 SITE LAYOUT AND DIMENSION PLAN, 11/28/2022 10:47:11 AM, Scallwell, AutoCAD PDF (General Documentation) pcd, 1:1



HOTEL PARKING

PARKING REQUIREMENT: 1 SPACE PER SUITE PLUS 1 FOR EVERY 10
 137 X 0.5 = 69 SPACES REQUIRED
 74 SPACES SHOWN
 SPACES SHOWN ARE 9' x 18'
 COMPACT SPACES ARE 8' x 16'

ADA SPACES REQUIRED: 3 SPACES PER VA BUILDING CODE
 1 VAN ACCESSIBLE

MOTORCYCLE SPACES REQUIRED: 8 REQUIRED
 MOTORCYCLE SPACES PROVIDED: 8 PROVIDED

BICYCLE SPACES REQUIRED: 140 ROOMS X 0.25 = 35
 35 REQUIRED
 BICYCLE SPACES PROVIDED: 40 PROVIDED

PARKING LOT TREES REQUIRED: 8 TREES
 PARKING LOT TREES PROVIDED: 8 TREES

PARKING LOT LANDSCAPING

PARKING LOT AREA: 25,250 SF
 PARKING LOT LANDSCAPING REQUIRED (5%): 1,263 SF
 PARKING LOT LANDSCAPING PROVIDED: 1,426 SF

ADDITIONAL LANDSCAPING NOTES:

- STREET TREES, PARKING LOT LANDSCAPING TREES AND GENERAL SITE LANDSCAPING TREES SHALL BE SELECTED FROM THE RECOMMENDED TREE SPECIES LIST IN SECTION 5429 OF THE TOWN OF BLACKSBURG ZONING ORDINANCE AND MEET THE SIZING REQUIREMENTS FOUND THEREIN OR AS APPROVED BY THE TOWN OF BLACKSBURG ZONING ADMINISTRATOR.
- SHRUBS SHALL BE VARIED AROUND THE SITE IN GENERAL CONFORMANCE WITH THE LAYOUT SHOWN ON THIS CONCEPT PLAN, A MINIMUM OF 3 GALLONS OR 24" TALL AT THE TIME OF PLANTING DEPENDING ON THE SELECTED SPECIES, AND SHALL BE PLANTED A MAXIMUM OF 8 FT SPACING CENTER TO CENTER. SHRUBS SHALL BE SELECTED FROM THE FOLLOWING LIST:
 - GLOSSY ABELIA
 - BLUE PRINCESS HOLLY
 - HETZ JAPANESE HOLLY
 - INKBERRY HOLLY
 - CEDAR

THE APPLICANT RESERVES THE RIGHT TO MODIFY THE NUMBER OF BICYCLE AND MOTORCYCLE SPACES IN COORDINATION WITH THE ZONING ADMINISTRATOR. THE HOTEL USE IS NOT ADEQUATELY REPRESENTED IN DIVISION 2 OF THE ZONING ORDINANCE SECTIONS 5213(D) OR 5214.

The drawing, design, and digital files relating to this project are the property of Foresight Design Services. The reproduction, copying, or other use of this drawing without FDS's written consent is prohibited.

**MIDTOWN HOTEL
 SITE PLAN
 MONTGOMERY COUNTY
 MT. TABOR MAGISTERIAL DISTRICT**
 TOWN OF BLACKSBURG, VIRGINIA

PRELIMINARY
 NOT FOR CONSTRUCTION

REVISIONS		
NO.	COMMENTS	DATE

PROJECT TEAM	
PI	JOHN T. NEEL, PE
PM	STEVEN T. CARDENAS, EIT
DESIGN	ADS
ISSUE DATE	
10/03/2022	
FDS JOB NO.	
3283	
SHEET TITLE	
SITE LAYOUT AND DIMENSION CONCEPT PLAN	
SHEET NUMBER	
C2-01	