

BALZER & ASSOCIATES
PLANNERS / ARCHITECTS
ENGINEERS / SURVEYORS

Roanoke / Richmond
New River Valley
Shenandoah Valley

www.balzer.cc

80 College Street
Suite H
Christiansburg, VA 24073
540.381.4290

AC HOTEL - MIDTOWN DC-2

OVERALL EXISTING CONDITIONS

MOUNT TABOR MAGISTERIAL DISTRICT, MONTGOMERY COUNTY
TOWN OF BLACKSBURG, VIRGINIA

DATE 3/1/2023
SCALE 1" = 50'
REVISIONS

CUP 1
PROJECT NO 24230006.00



BALZER & ASSOCIATES
 PLANNERS / ARCHITECTS
 ENGINEERS / SURVEYORS

Roanoke / Richmond
 New River Valley
 Shenandoah Valley

www.balzer.cc

80 College Street
 Suite H
 Christiansburg, VA 24073
 540.381.4290

AC HOTEL - MIDTOWN DC-2

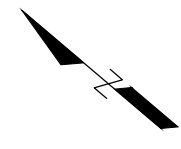
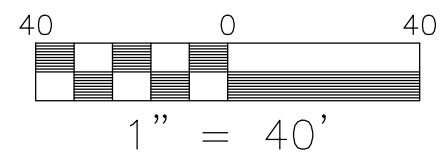
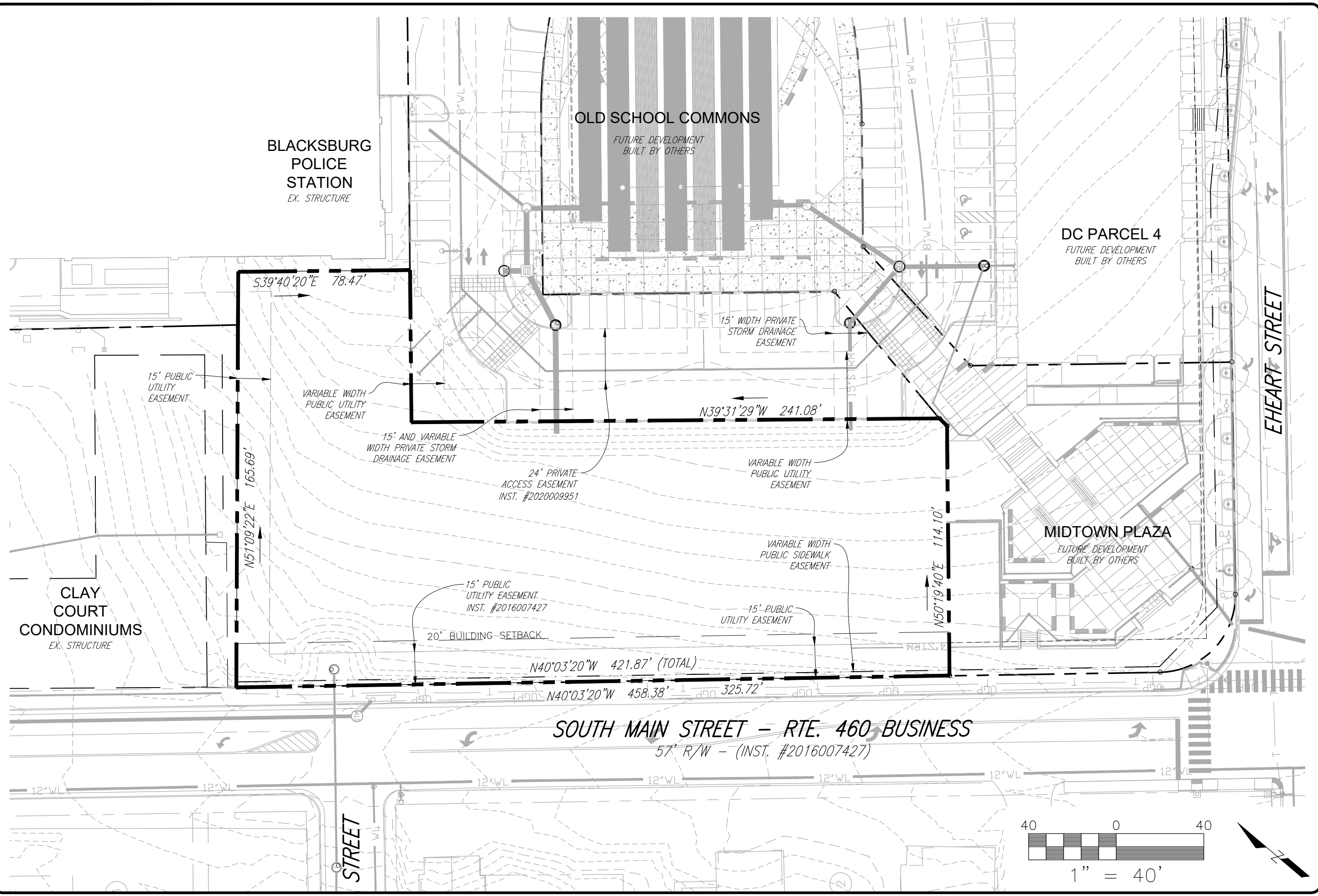
EXISTING CONDITIONS

MOUNT TABOR MAGISTERIAL DISTRICT, MONTGOMERY COUNTY
 TOWN OF BLACKSBURG, VIRGINIA

DATE 3/1/2023
 SCALE 1" = 40'
 REVISIONS

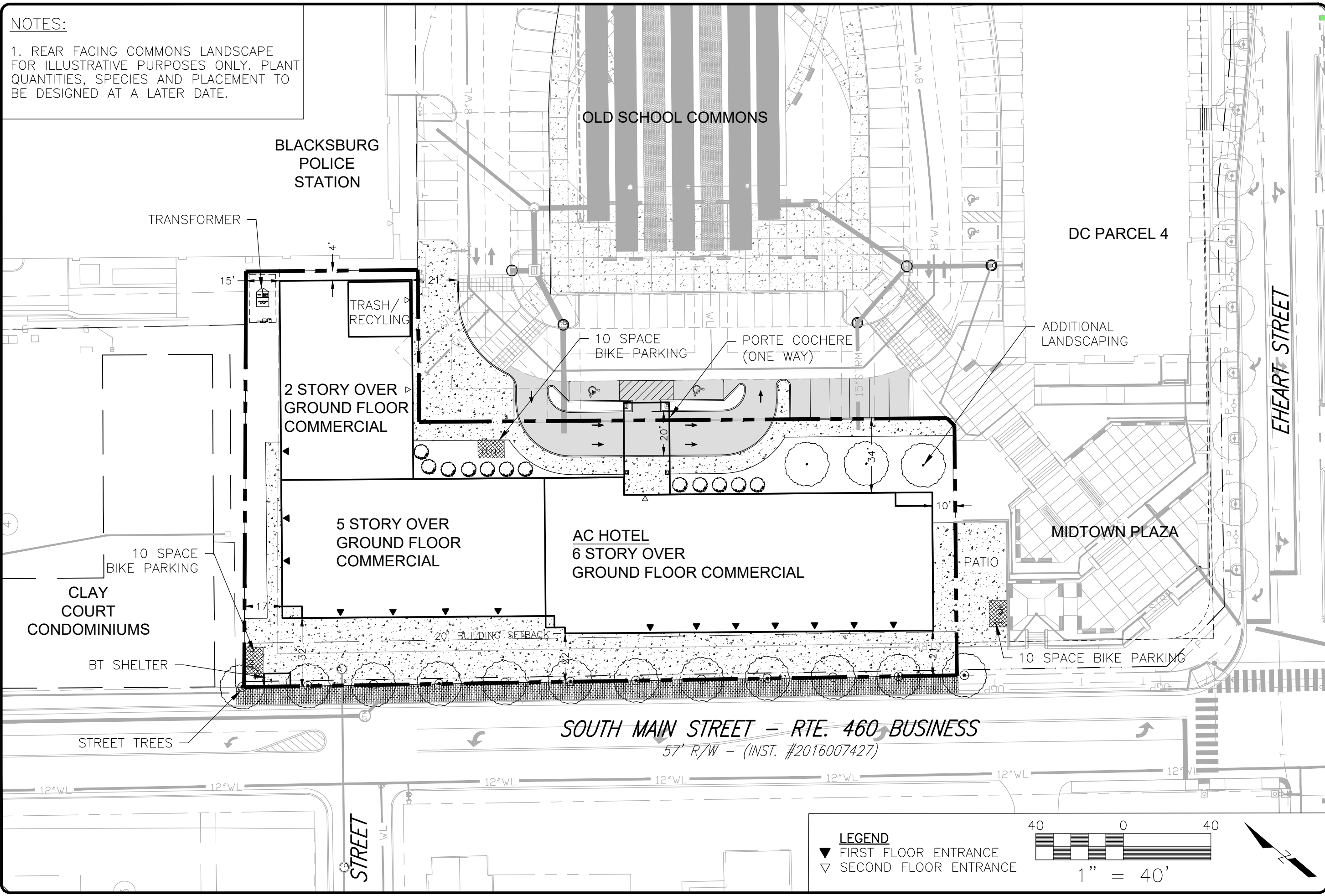
CUP 2

PROJECT NO 24230006.00



NOTES:

1. REAR FACING COMMONS LANDSCAPE FOR ILLUSTRATIVE PURPOSES ONLY. PLANT QUANTITIES, SPECIES AND PLACEMENT TO BE DESIGNED AT A LATER DATE.



BALZER & ASSOCIATES
 PLANNERS / ARCHITECTS
 ENGINEERS / SURVEYORS

Roanoke / Richmond
 New River Valley
 Shenandoah Valley

www.balzer.cc

80 College Street
 Suite H
 Christiansburg, VA 24073
 540.381.4290

AC HOTEL - MIDTOWN DC-2

MASTERPLAN

MOUNT TABOR MAGISTERIAL DISTRICT, MONTGOMERY COUNTY
 TOWN OF BLACKSBURG, VIRGINIA

DATE 3/1/2023
 SCALE 1" = 40'
 REVISIONS

CUP 3

PROJECT NO 24230006.00

The drawings are illustrative of character and design intent only, and are subject to change based upon final design considerations



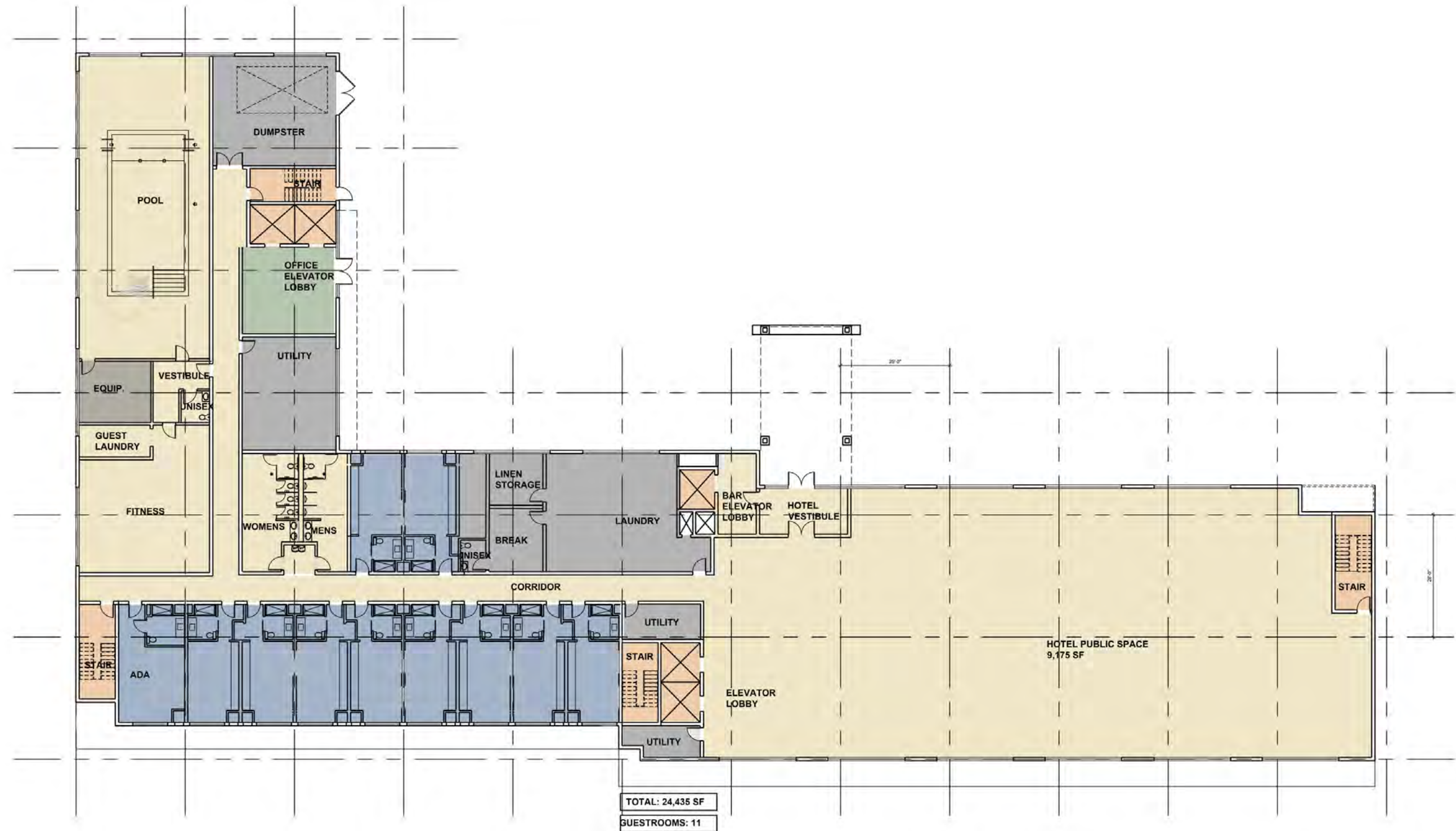
AC HOTEL
BLACKSBURG, VIRGINIA
MARCH 1, 2023



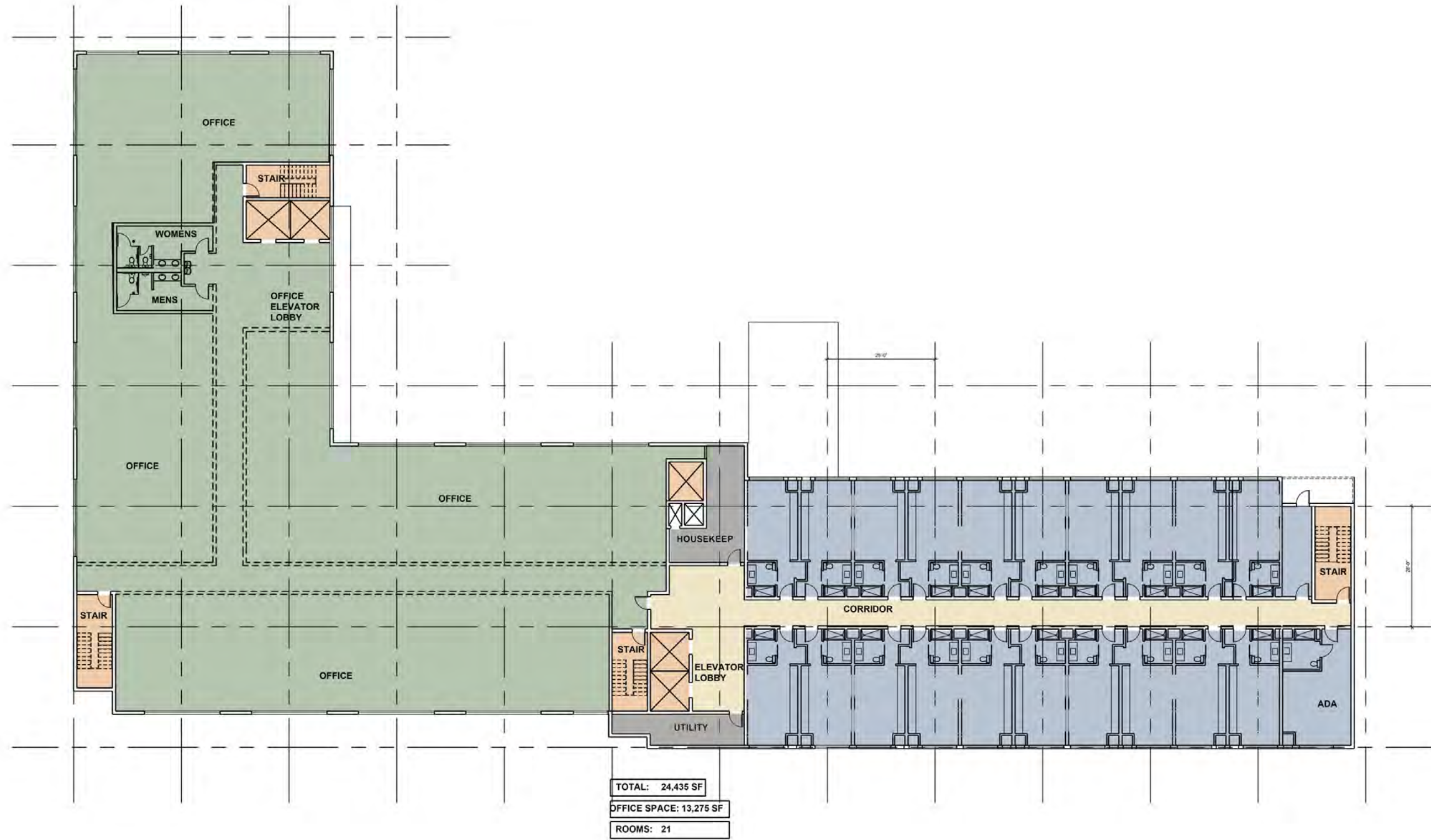


FIRST FLOOR PLAN

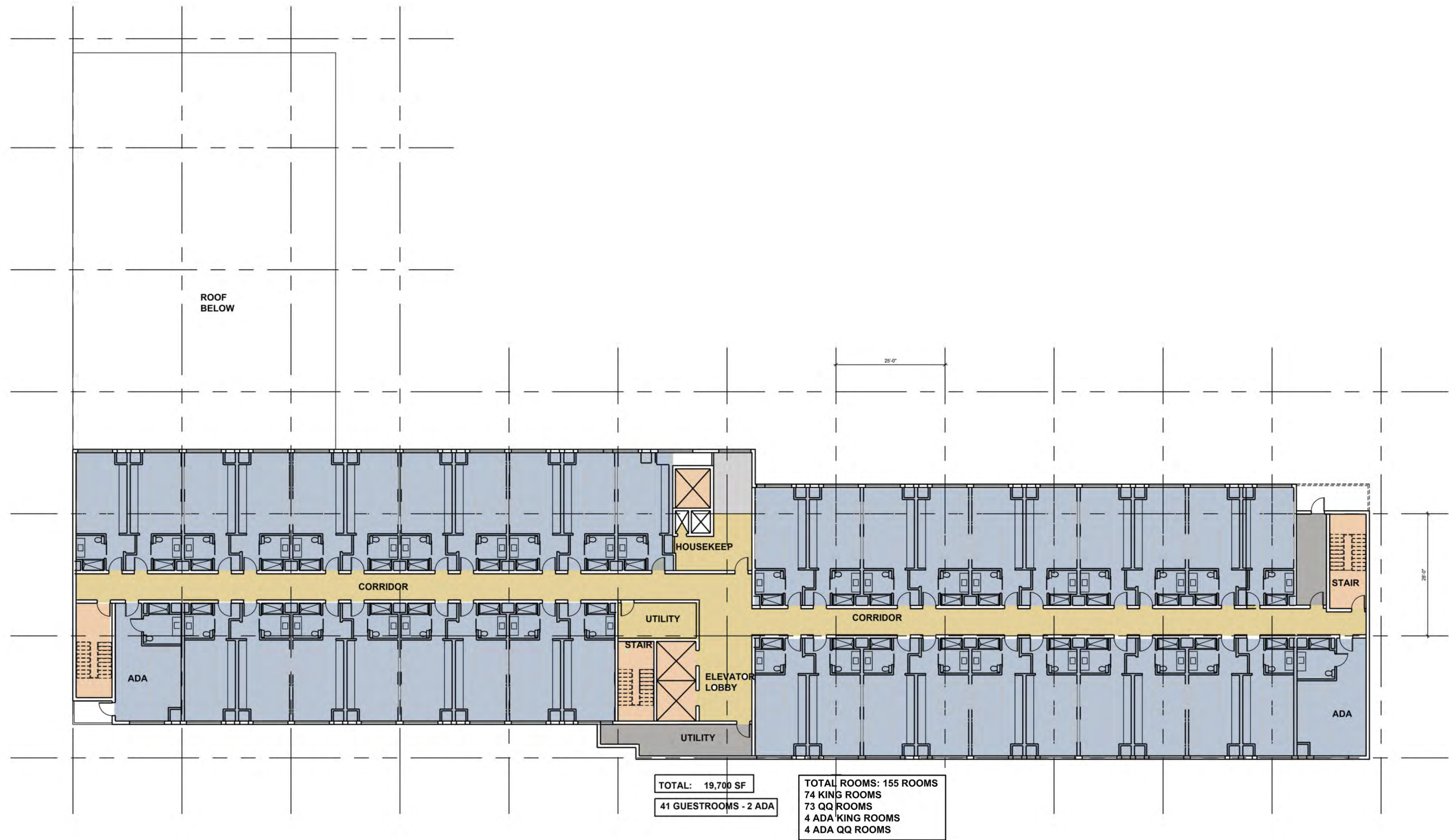
TOTAL: 24,435 SF
COMMERCIAL/RETAIL: 20,905 SF



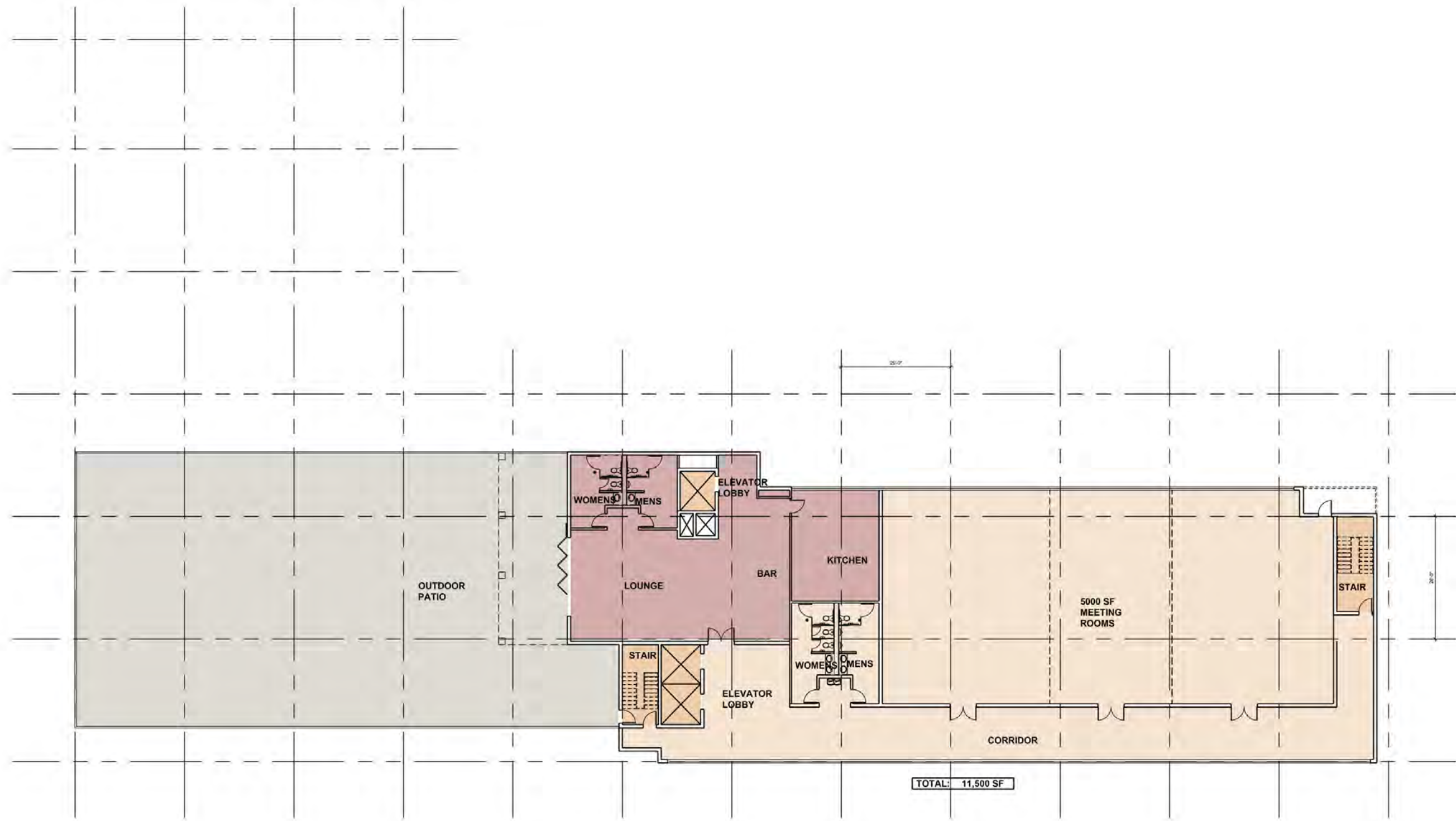
SECOND FLOOR PLAN



THIRD FLOOR PLANS



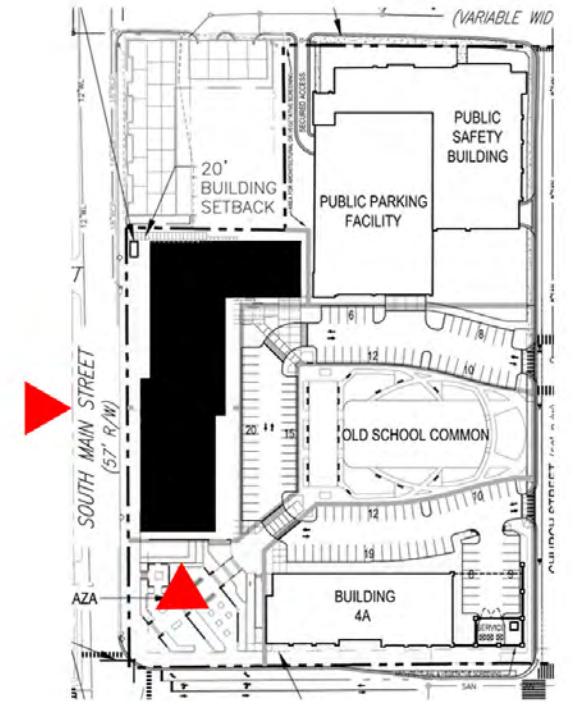
FOURTH - SIXTH FLOOR PLAN








SEVENTH FLOOR PLAN



BUILDING ELEVATION - SOUTH MAIN STREET

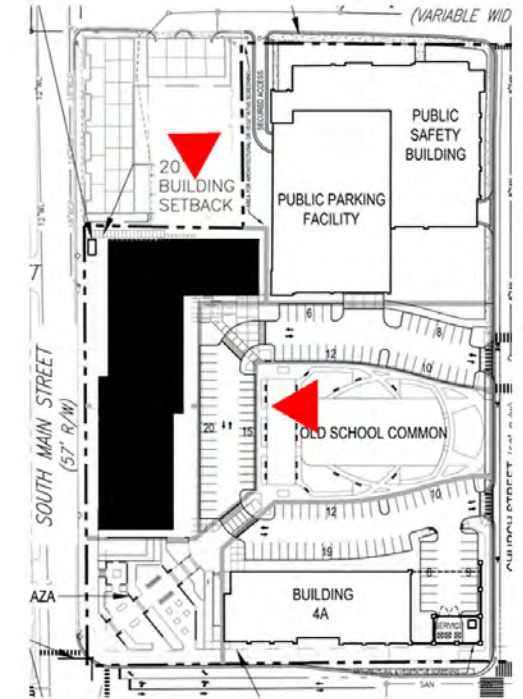


BUILDING ELEVATION - NORTHEAST






-  BRICK
-  SYNTHETIC WOOD LOOK
-  METAL PANEL - 1
-  METAL PANEL - 2
-  METAL PANEL - 3



BUILDING ELEVATION - PARKING



BUILDING ELEVATION - SOUTHWEST

-  BRICK
-  SYNTHETIC WOOD LOOK
-  METAL PANEL - 1
-  METAL PANEL - 2
-  METAL PANEL - 3

The drawings are illustrative of character and design intent only, and are subject to change based upon final design considerations



AC HOTEL
BLACKSBURG, VIRGINIA
MARCH 1, 2023



The drawings are illustrative of character and design intent only, and are subject to change based upon final design considerations



AC HOTEL
BLACKSBURG, VIRGINIA
MARCH 1, 2023

