



Draper Aden Associates
 Engineering • Surveying • Environmental Services
 1030 Wilmer Avenue, Suite 100
 Richmond, VA 23227
 804-264-2228 Fax: 804-264-8773
 www.daa.com



EROSION & SEDIMENT CONTROL AND DEMOLITION PLAN
PATRICK HENRY DRIVE BUS STOP
 PRICES FORK MAG. DISTRICT, BLACKSBURG, MONTGOMERY COUNTY, VIRGINIA

DESIGNED BY: AJH
 DRAWN BY: MJR
 CHECKED BY: JEH
 SCALE: 1" = 10'
 DATE: 10/04/2022
 PROJECT NUMBER: 2102060

C201

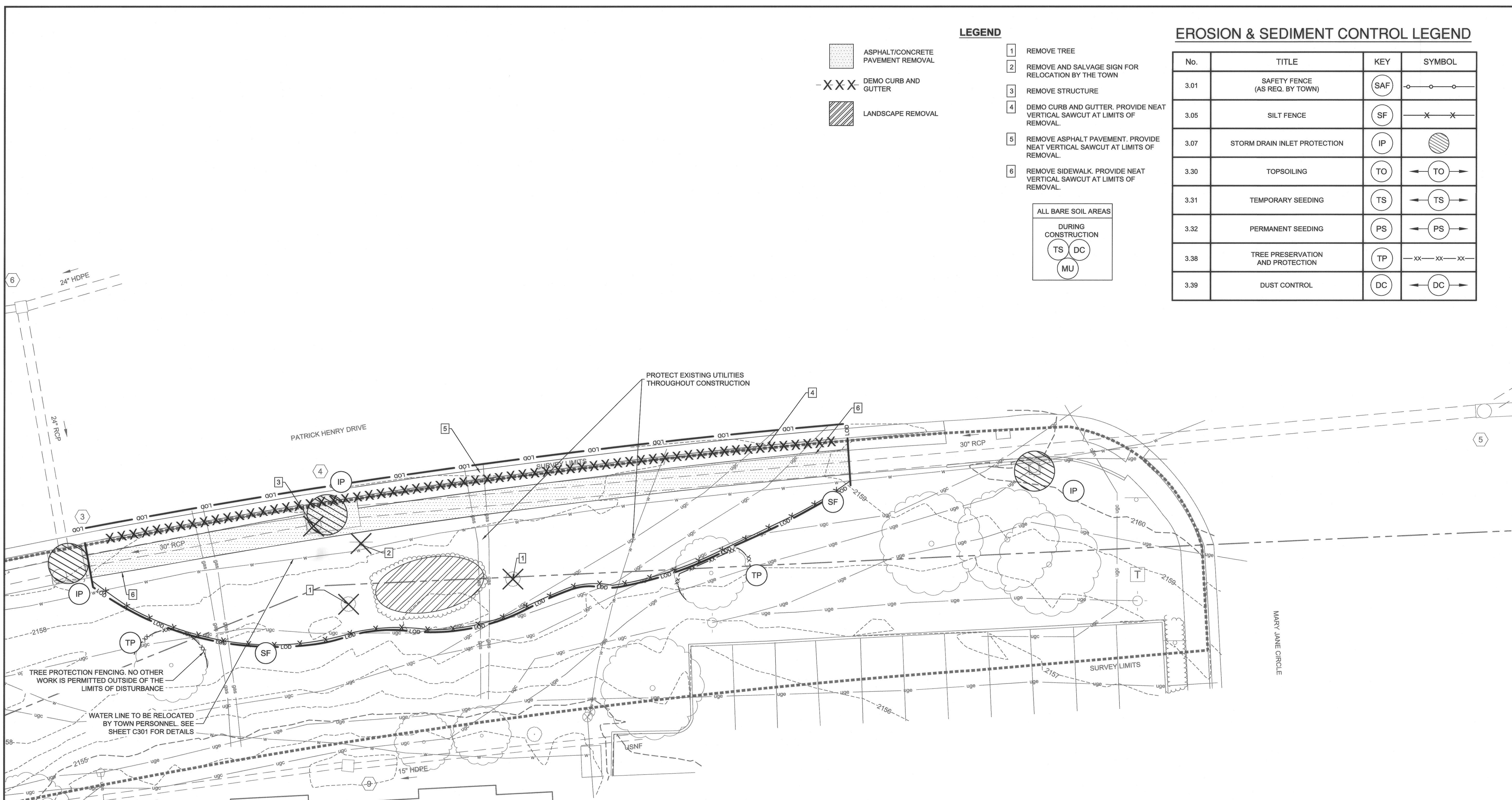
EROSION & SEDIMENT CONTROL LEGEND

No.	TITLE	KEY	SYMBOL
3.01	SAFETY FENCE (AS REQ. BY TOWN)	SAF	○—○—○
3.05	SILT FENCE	SF	—X—X—
3.07	STORM DRAIN INLET PROTECTION	IP	⊗
3.30	TOPSOILING	TO	← TO →
3.31	TEMPORARY SEEDING	TS	← TS →
3.32	PERMANENT SEEDING	PS	← PS →
3.38	TREE PRESERVATION AND PROTECTION	TP	—XX—XX—XX—
3.39	DUST CONTROL	DC	← DC →

LEGEND

- 1 REMOVE TREE
 - 2 REMOVE AND SALVAGE SIGN FOR RELOCATION BY THE TOWN
 - 3 REMOVE STRUCTURE
 - 4 DEMO CURB AND GUTTER, PROVIDE NEAT VERTICAL SAWCUT AT LIMITS OF REMOVAL.
 - 5 REMOVE ASPHALT PAVEMENT. PROVIDE NEAT VERTICAL SAWCUT AT LIMITS OF REMOVAL.
 - 6 REMOVE SIDEWALK, PROVIDE NEAT VERTICAL SAWCUT AT LIMITS OF REMOVAL.
- ALL BARE SOIL AREAS DURING CONSTRUCTION
- TS ○
 ○ DC ○
 ○ MU ○

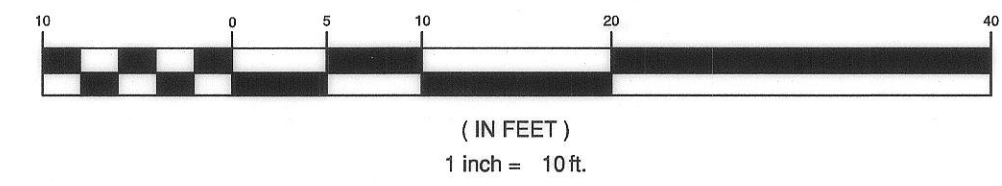
- ASPHALT/CONCRETE PAVEMENT REMOVAL
- DEMOCURB AND GUTTER
- LANDSCAPE REMOVAL



TOWN APPROVAL

	6/21/23
TOWN PLANNER	DATE
	6/21/23
TOWN ENGINEER	DATE

GRAPHIC SCALE



P:\2021\2102060\2102060.dwg AND DEMOLITION PLAN.dwg/Date: 6/22/23 11:54 AM