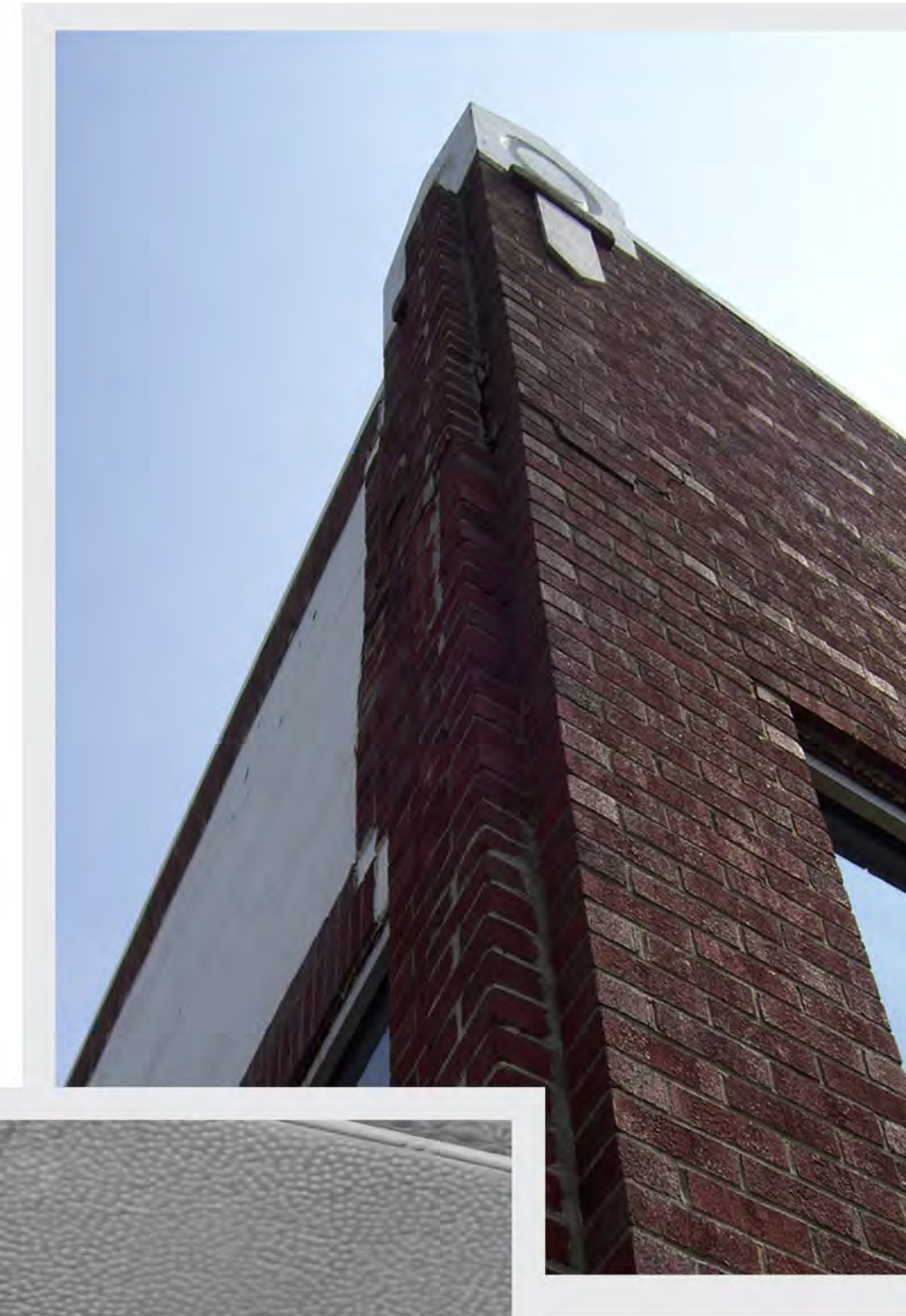
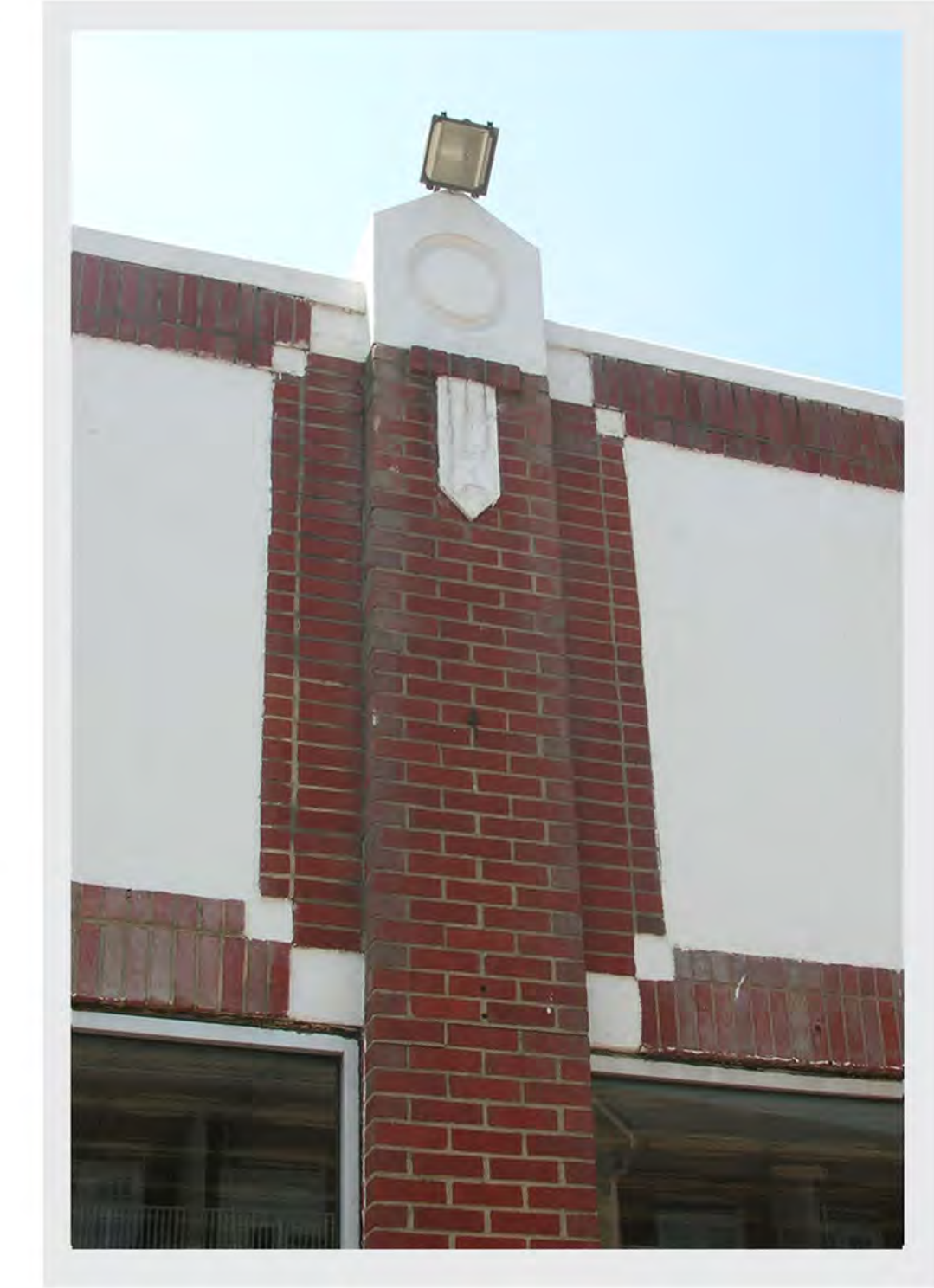


HISTORIC WOOD WORK

HISTORIC ARCHED MOHAGANY WOOD WORK



CORNER PILASTER



CHEVRON PILASTER



DECORATIVE TIN CORNICE AND CEILING



ORIGINAL TERRAZZO FLOORS



HISTORIC DOORS REFINISHED AND REINSTALLED

- PERIOD OF SIGNIFICANCE : 1924-1950 / CONSTRUCTED IN 1924
- MATERIALS : CONCRETE FOUNDATION / MASONRY (BRICK) WALLS
- ART DECO CHEVRON DETAILS AT PILASTERS - CEMENT STUCCO PANELS
- BANDS OF WINDOWS WITH STEEL FRAMES

- LISTED ON THE NATIONAL REGISTER OF HISTORIC PLACES 2008
- ARCHITECTURAL CLASSIFICATION : ART MODERNE / INDUSTRIAL VERNACULAR
- AREAS OF SIGNIFICANCE : TRANSPORTATION, ARCHITECTURE, COMMERCE